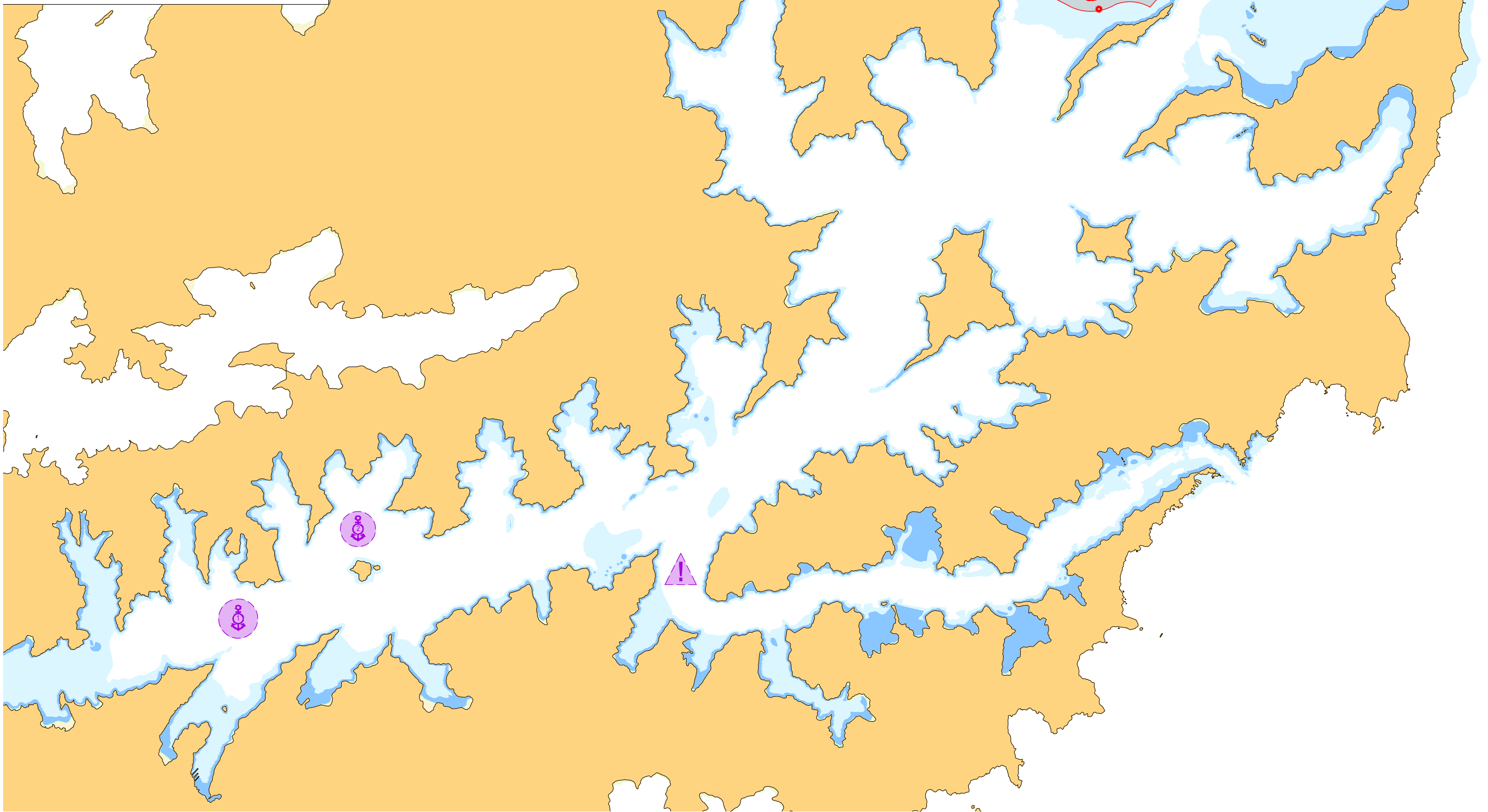


WP No.	Leg No.	Waypoint Name	Lat (S)	Long (E)	Turn Radius NM(m)	Planned Speed	Safety Corridor Port NM(m)	Safety Corridor Stbd NM(m)	True Co. Deg.	Dist. NM	Time
1	1	Pilot Station A	41 04.620	174 18.920	-	8.0	0.5(926)	0.5(926)	221.8/041.8	1.90	15m
2	2	Motuara Island	41 06.065	174 17.207	0.5(926)	10.0	0.15(278)	0.15(278)	222.0/042.0	0.50	3m
21	3	Motuara Island South	41 06.432	174 16.768	0.5(926)	10.0	0.15(278)	0.15(278)	297.2/117.2	1.20	7m
22	4	Ship Cove	41 05.848	174 15.259	-	6.0	0.15(278)	0.15(278)	297.3/117.3	0.50	5m
23	5	C1 Anchorage	41 05.617	174 14.665	-	-	-	-	-	-	-
										4.10	30m

NOTE - THIS ROUTE CAN BE REVERSED FOR DEPARTURE



Port Marlborough

14 Auckland Street, Picton  
PO Box 111, Picton 7250  
Telephone (03) 520 3399  
Fax (03) 573 7695

[www.portmarlborough.co.nz](http://www.portmarlborough.co.nz)

## PILOTAGE PLANNING CHART 2020

### ROUTE 7 - NORTHERN ENTRANCE TO SHIPS COVE

1:100,000