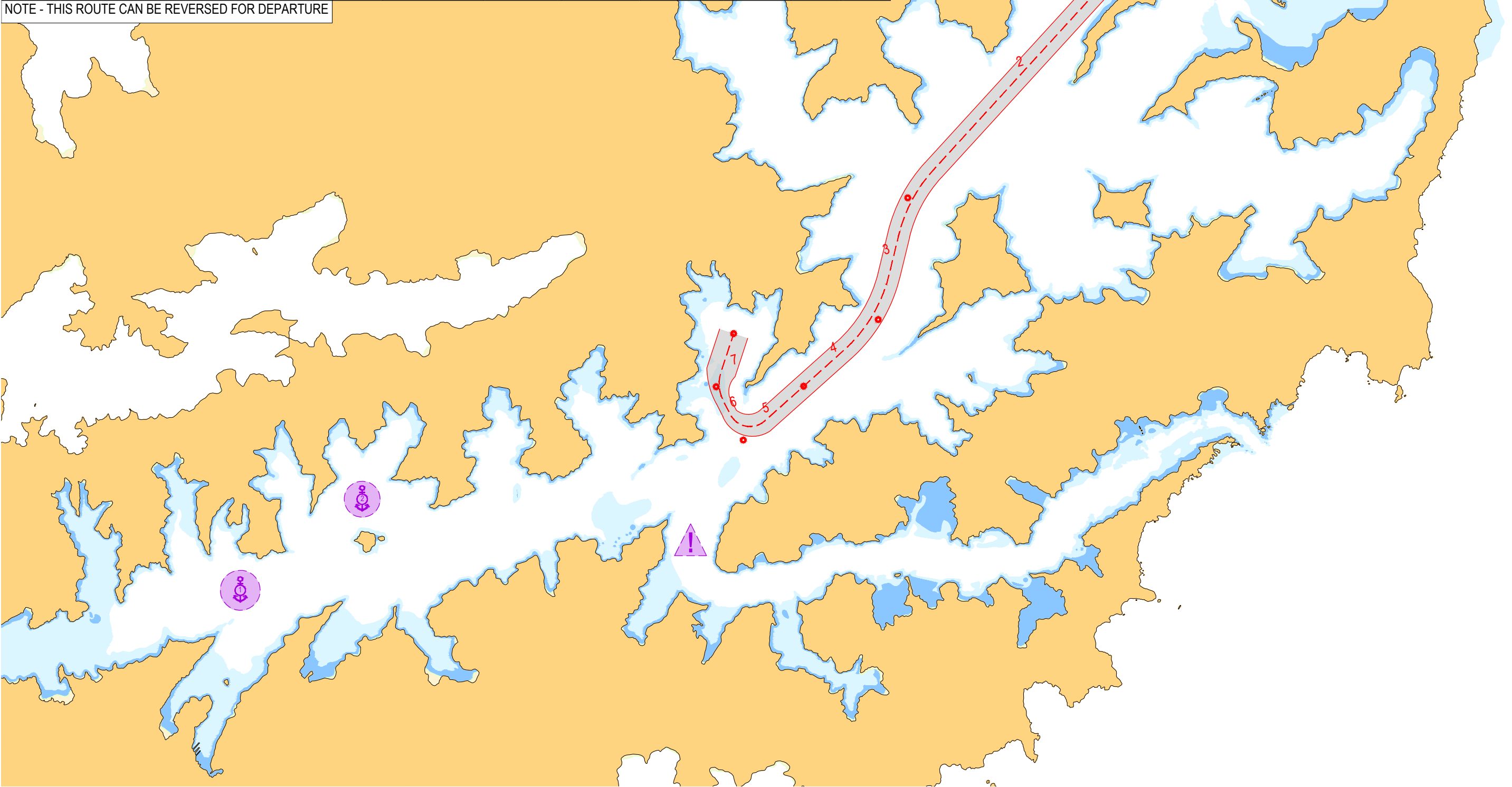


WP No.	Leg No.	Waypoint Name	Lat (S)	Long (E)	Turn Radius NM(m)	Planned Speed	Safety Corridor Port NM(m)	Safety Corridor Stbd NM(m)	True Co. Deg.	Dist. NM	Time
1	1	Pilot Station A	41 04.620	174 18.920	-	8.0	0.5 (926)	0.5 (926)	221.8/041.8	1.94	15m
2	2	Motuara Island	41 06.065	174 17.207	-	15.0	0.15 (278)	0.15 (278)	222.0/042.0	4.67	19m
3	3	Edgecombe Point	41 09.530	174 13.060	2.0 (3704)	15.0	0.15 (278)	0.15 (278)	193.3/013.3	1.70	07m
4	4	Kura Kura Point	41 11.180	174 12.540	2.0 (3704)	10.0	0.15 (278)	0.15 (278)	227.8/047.8	1.35	08m
43	5	Snake Point East	41 12.088	174 11.208	-	7.0	0.15 (278)	0.15 (278)	227.8/047.8	1.09	09m
44	6	Snake Point South	41 12.821	174 10.131	0.3 (555)	6.0	0.1 (185)	0.1 (185)	333.0/153.0	0.81	08m
45	7	Bay of Many Coves	41 12.100	174 09.640	0.5 (926)	6.0	0.2 (370)	0.2 (370)	018.0/198.0	0.76	08m
46	8	Bay of Many Coves Head	41 11.380	174 09.950	-	-	-	-	-	-	-
										12.31	1h13m

NOTE - THIS ROUTE CAN BE REVERSED FOR DEPARTURE



Port Marlborough

14 Auckland Street, Picton  
PO Box 111, Picton 7250  
Telephone (03) 520 3399  
Fax (03) 573 7695

[www.portmarlborough.co.nz](http://www.portmarlborough.co.nz)

## PILOTAGE PLANNING CHART 2020

### ROUTE 15 - NORTHERN ENTRANCE TO BAY OF MANY COVES

1:100,000